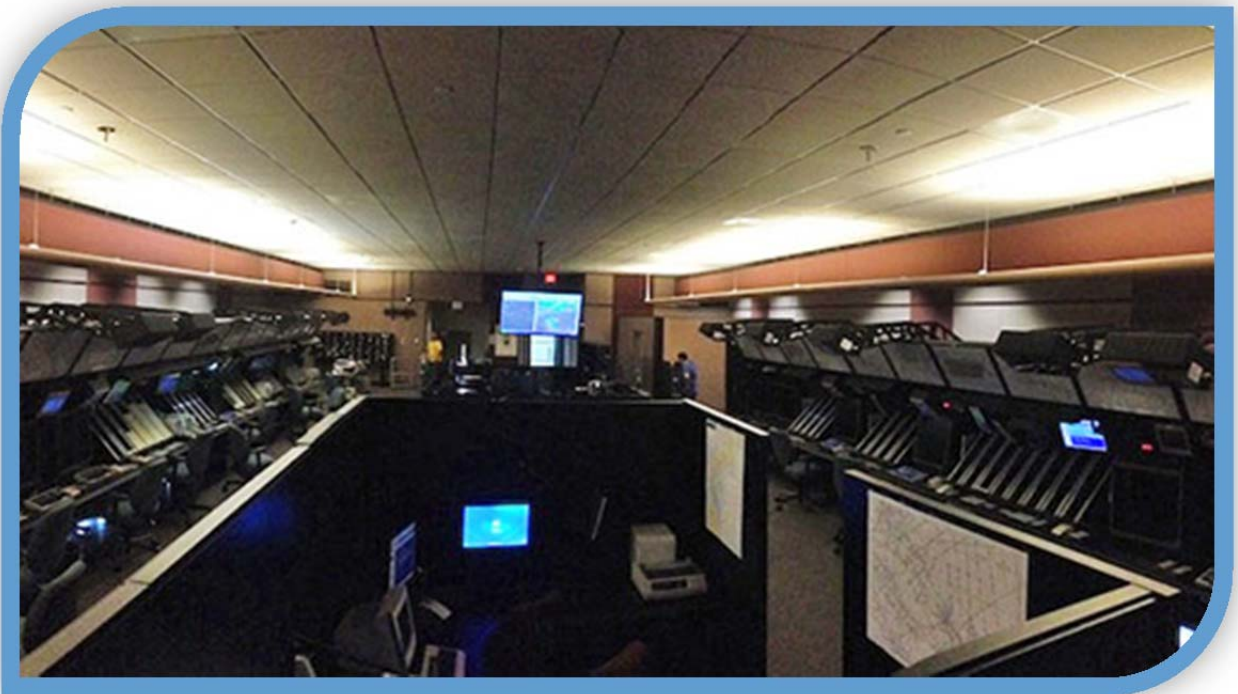


**Employee Requested Reassignment (ERR) and
National Centralized Process Team (NCEPT)
FY 2016 Program Report**



Management Services

People Services

Field Technical Requirements and Forecasting Group

Air Traffic Services Team, AJG-P21

March 22, 2017



Contents

Contents	1
Background.....	1
Overview	3
Fiscal Year 2016 NCEPT Panels In Review	3
2016 Second Quarter (March 2016) Panel.....	4
2016 Third Quarter (June 2016) Panel.....	5
2016 Fourth Quarter (September 2016) Panel	6
Analysis Balancing the Workforce.....	7
Challenges	8
Outlook for 2017	9
Points of Contact.....	9
Reference.....	10

Background

In September 2012, the Agency sought to review, revise and improve data-based, operational models for the distribution of air traffic control specialists throughout air traffic control facilities.

In 2014, the Collaborative Resource Workgroup consisting of the Federal Aviation Administration (FAA) and National Air Traffic Controllers Association (NATCA) approved interim Certified Professional Controller (CPC) “targets” for each facility to baseline each facility for placement and a measurement of facility health. These targets were in lieu of model-based targets for each facility from the Labor Analysis staffing models.



This was memorialized in a Memorandum of Understanding (MOU) between the FAA and NATCA: “Establishment of the National Collaborative Placement Team (NCPT) and associated standard operating procedure (SOP) and a National Release Policy, dated November 4, 2015.

The National Centralized ERR Process Team (NCEPT) was designed to ensure that facilities that were in most need of transfers, those that were below the national CPC to Target average and projected to remain below the target were prioritized in the selection process. Additionally, employees selected for these facilities through the employee reassignment request (ERR) process were not selected from facilities that faced immediate and long-term staffing challenges. In general, ERRs from employees located at facilities that exceeded current and projected national CPC staffing were the ideal candidates to ensure the workforce was balanced throughout the system.

Additionally, the agreement provides for an expedited release of the employee with 3 months up to 1 year depending on current facilities staffing.

Prior to the current NCEPT process, employees were transferred between facilities without regard to the current or new facility’s health and release dates to the new facility were not effective for two years.

As the two year effective date approached, employees often were selected for another facility in which they had an active ERR to or had decided to decline the initial offer. This left the gaining facility with little predictability in future staffing.

The NCEPT consists of stakeholders from Air Traffic Services (AJT), Human Resources Services (AHR), Employee Services Team (ASG), Management Services (AJG), and the NATCA.

The NCEPT is the sole process for the evaluation and approval/disapproval of ERRs from bargaining unit employees desiring consideration for placement to positions covered by the Collective Bargaining Agreement (CBA). The goal of this process is to facilitate a more timely release of employees requesting transfer, while seeking to improve the distribution of the workforce.



Facility priority is based on the Facility Priority Placement Tool (FPPT) that was developed to prioritize placement of controllers based on the needs of the controller and the facility. The tool and the output, the Facility Placement Plan - measures current staffing and future projections to determine facility need based on their projected number of CPCs in relation to their CPC target number. This target was formally the “Service Unit Input” to the hiring plan, but changed to the CPC targets as agreed to by the Air Traffic Organization (ATO) and NATCA in 2015.

The FPPT, Staffing Workbook (SWB), and Decision Lens Software are the major data input sources used to determine facility health, facility priority and facility status that enables NCEPT the ability to make ERR selections.

As AJG-P21 work towards balancing the controller workforce, emphasis is placed on the facilities in most need regardless of level and type. A facility’s status determines the timeline in which an employee can transfer from their facility if selected. Category 1 facilities are required to release a selected employee within three (3) months up to six (6) months (at the election of the employee) from the selection date. Category 2 facilities are required to release a selected employee within one (1) year of the selection date.

The NCEPT process reinforces AJG-P21’s philosophy of natural and logical controller career progression. As controllers obtain certification becoming CPCs at lower facilities, transfers from level 4, 5, 6 facilities to level 7, 8, 9 facilities and subsequently level 10, 11, 12 facilities offers the controller a greater probability of becoming successfully certified at a more complex facility.

Overview

Management Services, People Services, Field Technical Requirements and Forecasting, Air Traffic Services Team (AJG-P21) manages the ERR process thus the NCEPT program. The program has evolved over time from a decentralized structure through the Service Center Employee Services Team to a centralized process within the Air Traffic Services Team. This movement to a centralized approach leverages the use of priority placement models along with other centralized placement processes for new hires and ERR.

The result has been a reduction in time for employees who are selected through the NCEPT process requesting to transfer. Based on facility status, employees are expected to transfer as early as three (3) months of their selection date and no later than one (1) year of their selection date.



Fiscal Year 2016 NCEPT Panels In Review

NCEPT Panel Review meetings were held in Washington DC. Management Services, Field Technical Requirements and Forecasting, Air Traffic Services Team managed the data preparation, tools and processes for the panel.

Panel Members

- Director of Operations, Air Traffic Services, Tony Roetzel
- Director of Operations, Air Traffic Services, Jeffrey Vincent
- National Air Traffic Controllers Association (NATCA), Andrew LeBovidge
- National Air Traffic Controllers Association (NATCA), Michael Robicheau
- Human Resources, Debbie Larson

The NCEPT panel members include representatives from NATCA collaborated on all process decisions. The Director of Operations for Air Traffic Services was the selecting official for ERR selections based on input from the receiving facility Air Traffic Manager.

Stakeholders and Participants

- ATO Management Services, Gene Burdick, Group Manager
- ATO Management Services, Terry Craft, Air Traffic Services Team Manger
- ATO Management Services, Taurice McMillan, Program Manager
- ATO Mission Support, Ernie Thomas, Eastern EST Team Manager
- ATO Mission Support, Faith Downes, Central EST Team Manager
- ATO Mission Support, Jerome Woods, Western EST Team Manager

After the signing of the MOU in November 2015 (FY16), the Air Traffic Services Team was tasked with developing data-based models and tools that would prioritize facilities that would select ERRs and determining eligible employee package considerations based on the agreement. This required the development of a database that would take in all the data that was needed and produce reports and facility priorities.

An ERR module was created for SWB to allow a national view into all requested ERR's throughout the facilities. This is used by the Office of Human Resources to input field requests and by the NCEPT to determine eligible employees.

Using the Microsoft Access application to power, the ERR Database with data sources including FPPT, SWB, and Decision Lens models are imported into the database. The ERR Database contains multiple tables and queries that can be imported, exported and linked. These tools and the data produced are used to conduct analysis, answer inquiries, and provide recommendations to management and the NCEPT panel in real-time. Our goal is to ensure that all data and actions resulting from the process are transparent to customers, stakeholders, including managers and employees in the field by sharing information via our Share Point (KSN) site: <https://ksn2.faa.gov/ajg/ajg-r/AJG-R4/AJG-R41/nceptpublic/SitePages/Home.aspx>

AJG-P21 facilitates the NCEPT selection meeting and updates the database after each NCEPT panel selection. Using the database, facilities are ranked, and selections are annotated by name, facility, and category. The database updates once a selection is made. Once all selections have been made and reviewed by the NCEPT panel, selections are published to our Share Point public page. Administrative actions take place prior to and after the NCEPT selection meeting to include publishing the "Manager Ranking List", "Selection List" and all agendas and meeting minutes. All tentative and firm offers letters and effective dates are monitored for compliance with the MOU.

2016 Second Quarter (March 2016) Panel

Four months after the MOU was signed, the first NCEPT Panel was held in March 1, 2016, there were 166 active ERR requests from 138 individual employees considered. Facility priority was established based on the latest data from the FPPT, Decision Lens and SWB as of the last week in February 2016. (Appendix 1)

Based on the criteria of facility category, there were 66 facilities that were either (1) facility current CPC to Target was above the national average and projected CPC to Target



percentage was above 90% or (2) facility current CPC to Target was above the national average projected CPC to Target percentage was above the projected national average.

There were 79 possible facilities that could select ERR requests from these 66 “losing” facilities. There were 66 total selections, 52 were from “Category 1” facilities (no more than a 3 month release date) and 13 from “Category 2”, (no more than one year release date); Priority Placement Move 1. En Route selected 12 and Terminal 54.

Of the 66 offers, 54 accepted (82%) the offer and 12 declined (18%). The declinations were primarily from employees who had multiple ERRs into multiple facilities and were selected to the highest priority facility thus making them ineligible for further consideration during the panel meeting. As of September 30, 2016, all selectees who accepted the offers have effective dates to report to their new facility.

2016 Third Quarter (June 2016) Panel

The second NCEPT Panel was held in June 9, 2016; the panel agreed to changes in the process from lessons learned in the first panel:

1. ATC level 7 and below facilities would be allowed to be staffed up to 100% of the projected CPC to Target for NCEPT purposes allowing additional employees to be considered for transfer and
2. Quality Ranking Factors will be used to determine well qualified candidates for selection.

There were 400 active ERR requests from 223 individual employees considered an increase of 141% and 62% respectively. Facility priority was established based on the latest data from the FPPT, Decision Lens and SWB as of the last week in May 2016. (Appendix 2)

Based on the criteria of facility category, there were 73 facilities that were either (1) facility current CPC to Target was above the national average and projected CPC to Target percentage was above 90% or (2) facility current CPC to Target was above the national average projected CPC to Target percentage was above the projected national average.

There were 81 possible facilities that could select ERR requests from these 66 “losing” facilities. There were 105 total selections, 66 were from “Category 1” facilities (no more than a 3 month release date) and 40 from “Category 2”, (no more than one year release date); En Route selected 14 and Terminal 90.

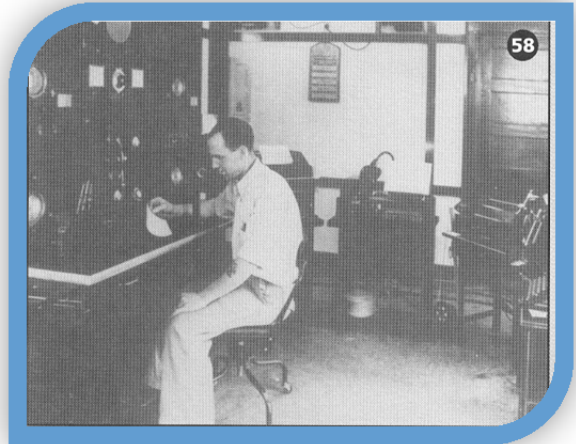
Of the 105 offers, 100 accepted (96%) the offer and 4 declined (4.0%). As of September 30, 2016, all selectees who accepted the offers have effective dates to report to their new facility.

2016 Fourth Quarter (September 2016) Panel

The third FY 16 NCEPT Panel was held in September 23, 2016, the panel agrees to changes in the process from lessons learned in the first panel:

Chicago and New York TRACONS (C90, N90) will no longer be considered during the NCEPT selection meeting. This decision was made because these facilities have continuous open announcements.

It was also determined that AJG-P21 would provide a monthly list to the Employee Services Team informing employees of a change in facility status. Employees will be given the opportunity to change their effective date if the facility status has changed.



The NCEPT panel decided that mutually requested reassignments (Swaps) should be reviewed during the NCEPT selection meeting and AJG-R21 will update our internal standard operating procedures to outline the process for all future NCEPT selection meetings.

There were 416 active ERR requests from 179 individual employees. Facility priority was established based on the latest data from the FPPT, Decision Lens and SWB as of the last week in August 2016. (Appendix 3)

Based on the criteria of facility category, there were 57 facilities that were either (1) facility current CPC to Target was above the national average and projected CPC to Target percentage was above 90% or (2) facility current CPC to Target was above the national average projected CPC to Target percentage was above the projected national average

There were 121 possible facilities that could select ERR requests from these 57 “losing” facilities.

There were 75 total selections, 55 were from “Category 1” facilities (no more than a 3 month release date) and 20 from “Category 2”, (no more than one year release date); En Route selected 15 and Terminal 60.

Of the 75 offers, 71 accepted (94.7%) the offer and 4 declined (5.3%). As of December 31, 2016, all selectees who accepted the offers have effective dates to report to their new facility. 2016 Panel Totals

There were 982 active ERR requests from 540 individual employees.

Based on the criteria of facility category, there were 246 facilities that were either (1) facility current CPC to Target was above the national average and projected CPC to Target percentage was above 90% or (2) facility current CPC to Target was above the national average projected CPC to Target percentage was above the projected national average.

There were 246 total selections, 172 were from "Category 1" facilities (no more than a 3 month release date) and 74 from "Category 2", (no more than one year release date); En Route selected 42 and Terminal 204.

Of the 246 offers, 225 accepted (91.46%) the offer and 21 As of December 31, 2016, all selectees who accepted the offers have effective dates to report to their new facility.

Selection Date	Selections	Category 1	Category 2	Accepted Offer	Declined Offer	Effective Dates Established
FY16 Quarter 4	75	55	20	71	4	71
FY16 Quarter 3	105	65	40	100	5	100
FY16 Quarter 2	66	52	14	54	12	54
TOTALS	246	172	74	225	21	225

Analysis Balancing the Workforce

A review of the facilities where employees moved from "losing facilities" indicates that the majority of selections- 194 came from lower level facility groups (4-6; 7-9; 10-12) facilities to higher level facilities, movement up in level and complexity, with 84 lateral or moves within the current level bands. There were 19 total movements to a lower band.

Facility Level 4-6

It was expected that the majority of movement would come from facilities at the lower levels (4-6). This is primarily due to the intentional concentration of placement of new hires to these facilities, both with and without experience and the expansion of placement up to 100% of projected CPC target. Controllers selected from these facilities went overwhelmingly to ATC 10-12 facilities (76.4%), followed by level 7-9 facilities (18.9%) with 4.7% remaining within the same band of facilities.

Facility Level 7-9

The overwhelming majority of CPCs moving from level 7-9 facilities were placed at level 10-12 facilities, (86.9%) which is the ideal progression from this level facility. The remaining 11.2% remained within the same band or downgraded (1.8%) to the level 4-6 facilities

Facility Level 10-12

The majority (79.8%) remained within the same level and which is expected as this band is inclusive of the highest level facilities. There were 17 (20.2%) movement to a lower level facility.



NCEPT Selection Outcomes By Facility Level Groupings

Losing Facility Group	Gaining Facility Group					
	4-5-6	7-8-9	10-11-12	Upgrades	Lateral	Downgrades
4-5-6	5	20	81	101	5	0
7-8-9	2	12	93	93	12	2
10-11-12	1	16	67	0	67	17
<i>Total</i>	<i>8</i>	<i>48</i>	<i>241</i>	<i>194</i>	<i>84</i>	<i>19</i>

a. *Transfers across facility levels*

Challenges

A large number of employees from low level (4-6) facilities have or will transfer to our highest level (10-12) facilities. We will continue to track those movements and whether or not these employees attained facility certification. Depending on the outcomes, we may need to reevaluate the movement from the lower level and limit in number of levels for movement.

We will be enhancing the data collected and processing of the data including automation to reduce the resources required to conduct the NCEPT panels including: Enhanced automation of the selection process; Inclusion of Other than Controller Workforce (OTCWF) positions; Electronic Deviation Process; The elimination of "Exempt" status to include more facilities.

Outlook for 2017

The NCEPT will continue to review recommendations and lessons learned during the first year of the new process. Further analysis of data obtained from employees transferring from one facility to another will drive process and document reviews.

We will review the potential to open up the process to more movement by adjusting the number of employees allowed to leave a facility by lowering or adjusting the “exempt” category.

Points of Contact

TITLE	NAME	TELEPHONE #	EMAIL
ATS Director of Operations (C)	Tony Roetzel	(817) 222-5000	Tony.Roetzel@faa.gov
ATS Director of Operations (E)	Jeffrey Vincent	(404) 305-6212	Jeffrey.Vincent@faa.gov
Group Manager AJG-P2	Gene Burdick	(202) 267-0559	Gene.burdick@faa.gov
Manager AGJ-P21	Terry Craft	(202) 267-0570	Terry.craft@faa.gov
AJG-P21 ERR POC	Taurice McMillan	(202) 267-2698	Taurice.McMillan@faa.gov
Manager AHR	Debra Larson	(847) 294-7755	Debra.Larson@faa.gov
Manager Eastern EST	Ernest Thomas	(404) 305-5512	Ernie.Thomas@faa.gov
Eastern EST ERR POC	Angelita Watson	(404) 305-5507	Angelita.Watson@faa.gov
Manager Central EST	Faith Downes	(817) 222-4249	Faith.Downes@faa.gov
Central EST ERR POC	Valerie Epperson	(817) 222-4225	Valerie.Epperson@faa.gov
Manager Western EST	Jerome Woods	(425) 203-4110	Jerome.Woods@faa.gov
Western EST ERR POC	Shirley Hingada	(425) 203-4161	Shirley.Hingada@faa.gov
NATCA	Andrew LeBovidge		alebovidge@natca.net
NATCA	Michael Robicheau	(603) 533-6456	mrobicheau@natca.net

Reference

- FAA NATCA CBA
https://my.faa.gov/content/dam/myfaa/org/staffoffices/ahr/emp_labor_management_relations/labor_relations/agreements/media/cba/NATCA_2016_bu_0053_0061_1545_0064.pdf
- Memorandum of Understanding between the National Air Traffic Controllers Association, AFL-CIO and the Federal Aviation Administration dated November 4, 2015
<https://ksn2.faa.gov/ajg/ajg-r/AJG-R4/AJG-R41/Air%20Traffic%20Services%20Library/FAA%20NATCA%20ERR%20Release%20Policy%20MOU.pdf>
- FAA NATCA ERR Release Policy MOU Q and A <https://ksn2.faa.gov/ajg/ajg-r/AJG-R4/AJG-R41/Air%20Traffic%20Services%20Library/FAA%20NATCA%20ERR%20Release%20Policy%20MOU.pdf>
- Standard Operating Procedures: Responsibilities of the National Centralized ERR Process Team (NCEPT), Air Traffic Services Team AJG-P21 <https://ksn2.faa.gov/ajg/ajg-r/AJG-R4/SOPs>

Appendix: 1 March 2016 NCEPT Panel – Facility Priority and Selection List

NCEPT Priority	Facility
1	N90
2	C90
3	A80
4	D01
5	LAX
6	MIA
7	LAS
8	I90
9	D10
10	A90
11	SEE
12	BOS
13	HCF
14	M98
15	D21
16	ZDC
17	SCT
18	DEN
19	ATL
20	ZNY
21	PCT
22	ZTL
23	ZME
24	ZMA
25	ZJX
26	ZFW
27	PHL
28	TPA
29	P50
30	DFW
31	ZHU
32	ZAB
33	HIO
34	JFK
35	ZLA
36	VNY
37	S46
38	ZAU
39	NCT
40	EWR
41	LGA
42	ZMP
43	SLC
44	SGF
45	TUS
46	ZID
47	ZOB
48	BWI
49	TUL

NCEPT Priority	Facility
50	ZSE
51	S56
52	SFO
53	ADW
54	M03
55	MKC
56	OMA
57	ORD
58	CPS
59	CRP
60	BNA
61	MSP
62	FLL
63	MIC
64	ZDV
65	RNO
66	ZOA
67	BUF
68	PWM
69	TLH
70	ZKC
71	TMB
72	LEX
73	R90
74	SEA
75	IAH
76	AVP
77	IAD
78	ZSU
79	CLT
80	AMA
81	MEM
82	ALO
83	PHX
84	PDK
85	JAX
86	BDL
87	DAY
88	ZBW
89	P31
90	ZLC
91	GSP
92	ITO
93	BUR
94	T75
95	GGG
96	RVS
97	ARB
98	GRR

NCEPT Priority	Facility
99	CHA
100	CVG
101	BGR
102	GRB
103	SAN
104	ELP
105	MWH
106	E10
107	EUG
108	FPR
109	TOL
110	ABI
111	ABE
112	ILM
113	FNT
114	BHM
115	GEG
116	CAK
117	PHF
118	SBN
119	MDW
120	BTV
121	LCH
122	STP
123	PIA
124	SFB
125	LAF
126	FSM
127	SDF
128	DAB
129	DAL
130	CLE
131	RSW
132	ANC
133	SHV
134	AZO
135	DCA
136	LAN
137	ALB
138	FAY
139	BIL
140	BJC
141	CRQ
142	SMF
143	ICT
144	DTW
145	SAT
146	DSM
147	FCM

NCEPT Priority	Facility
148	LNK
149	TRI
150	ASE
151	MSY
152	MOB
153	BTR
154	L30
155	ILG
156	MLI
157	GFK
158	ACK
159	POU
160	F11
161	SMO
162	LIT
163	ROC
164	HEF
165	ROW
166	HOU
167	HLN
168	PUB
169	STL
170	SRQ
171	BPT
172	EVV
173	MDT
174	MCO
175	VRB
176	SAV
177	SBA
178	ZAN
179	SCK
180	DVT
181	GTF
182	HUF
183	PVD
184	CNO
185	LGB
186	FAI
187	JAN
188	AVL
189	ONT
190	AGC
191	MCI
192	GPT
193	HSV
194	ACY
195	SPI
196	HWD

Appendix: 1 March 2016 NCEPT Panel – Facility Priority and Selection List

NCEPT Priority	Facility
197	YIP
198	SUX
199	YNG
200	MHT
201	PRC
202	BIS
203	DLH
204	MGM
205	LFT
206	ZUA
207	RDU
208	GSO
209	PAO
210	MRY
211	TYS
212	PTK
213	HTS
214	Y90
215	CRW
216	BED
217	RDG
218	PIT
219	MYR
220	MLU
221	FAT
222	BFL
223	MRI
224	LBB
225	MYF
226	P80
227	VGT
228	MSN
229	AGS
230	MMU
231	OKC
232	CCR
233	CMI
234	CKB
235	LVK
236	ADS
237	K90
238	PBI
239	FWA
240	CPR
241	FRG
242	RST
243	LOU
244	FAR
245	MKG

NCEPT Priority	Facility
246	PNS
247	CSG
248	CAE
249	U90
250	SYR
251	RIC
252	CMA
253	FLO
254	SJC
255	CMH
256	ROA
257	COS
258	STT
259	ERI
260	DPA
261	FFZ
262	BGM
263	BOI
264	TVC
265	ARR
266	PDX
267	APA
268	MBS
269	MFD
270	SJU
271	EMT
272	ELM
273	AUS
274	PSC
275	OGG
276	GCN
277	NEW
278	IND
279	SNA
280	TWF
281	ABQ
282	OAK
283	ACT
284	FSD
285	PAE
286	FXE
287	SUS
288	RFD
289	ORF
290	DWH
291	HPN
292	CDW
293	FTW
294	CID

NCEPT Priority	Facility
295	MAF
296	MKE
297	ORL
298	ISP
299	A11
300	AFW
301	APC
302	SDL
303	BFI
304	TEB
305	JNU
306	STS
307	PWK
308	PIE
309	PNE
310	PSP
311	CHS
312	RHV
313	TOA
314	POC

Appendix: 1 March 2016 NCEPT Panel – Facility Priority and Selection List

Service Area	District	Facility To	Facility From
Central	Mid-America	MKC	SUS
Central	Mid-America	T75	STL
Central	Enroute	ZMP	K90
Central	Lake Effect	C90	MKE
Central	Lake Effect	C90	ZKC
Central	Northern Planes	M98	ZLC
Central	Northern Planes	M98	ABQ
Central	Enroute	ZFW	ZKC
Central	Enroute	ZFW	ZLC
Central	Enroute	ZFW	FTW
Central	Enroute	ZHU	BPT
Central	Greater Southwest	D10	OKC
Central	Greater Southwest	D10	FTW
Central	Texana	I90	F11
Central	Texana	I90	ZUA
Central	Texana	I90	Y90
Eastern	Capital	PCT	IAD
Eastern	Enroute	ZDC	F11
Eastern	New York	EWR	TEB
Eastern	New York	LGA	TEB
Eastern	Susquehanna	BUF	ZOB
Eastern	Susquehanna	PHL	TEB
Eastern	New England	A90	BOS
Eastern	New England	A90	L30
Eastern	Enroute	ZTL	ZDV
Eastern	Magnolia	BNA	ZKC
Eastern	Magnolia	BNA	ZKC
Eastern	Magnolia	BNA	F11
Eastern	Paradise	MIA	YIP
Eastern	Paradise	TPA	PIE
Eastern	Paradise	TPA	CHS
Eastern	Piedmont	CVG	LOU
Eastern	Piedmont	RDU	NCT
Eastern	Southern Skies	A80	SDL
Eastern	Southern Skies	ATL	DCA

Service Area	District	Facility To	Facility From
Eastern	Southern Skies	JAX	BWI
Western	Enroute	ZSE	DCA
Western	Enroute	ZSE	BJC
Western	Northwest	GEG	NCT
Western	Northwest	HIO	APC
Western	Northwest	P80	NCT
Western	Rocky Mountain	D01	SMF
Western	Rocky Mountain	D01	STL
Western	Rocky Mountain	D01	SBA
Western	Rocky Mountain	D01	FLL
Western	Rocky Mountain	D01	AUS
Western	Rocky Mountain	D01	FAR
Western	Rocky Mountain	D01	SBA
Western	Rocky Mountain	DEN	PDX
Western	Rocky Mountain	S56	ZLC
Western	Enroute	ZOA	SCT
Western	Southern California	CNO	TOA
Western	Southern California	LAX	SNA
Western	Southern California	LAX	MHT
Western	Southern California	LAX	SMF
Western	Southern California	SCT	ZDV
Western	Southern California	SCT	SNA
Western	Southern California	SCT	ZLC
Western	Southern California	SCT	ONT
Western	Western Desert	LAS	LGB
Western	Western Desert	LAS	NCT
Western	Western Desert	LAS	VGT
Western	Western Desert	LAS	SMF
Western	Western Desert	LAS	ADS
Western	Western Desert	LAS	TOA
Western	Western Desert	P50	PHX

Appendix: 2 June 2016 NCEPT Panel – Facility Priority and Selection List

NCEPT Priority	Facility
1	N90
2	C90
3	A80
4	BOS
5	DEN
6	MIA
7	D01
8	A90
9	ZTL
10	NCT
11	M98
12	SCT
13	LAX
14	JFK
15	ZDC
16	D21
17	PCT
18	ATL
19	ILG
20	M03
21	D10
22	ZNY
23	ZME
24	PHL
25	LAS
26	ZJX
27	EWR
28	ZAU
29	FLL
30	ZFW
31	ZAB
32	DFW
33	ZOB
34	I90
35	DVT
36	RNO
37	BDL
38	S56
39	MEM
40	LGA
41	HCF
42	SEE
43	ZLA
44	BWI
45	LAF
46	SLC
47	TPA
48	BUF

NCEPT Priority	Facility
49	DAY
50	S46
51	MSP
52	BPT
53	ZID
54	P50
55	ORD
56	IAH
57	Y90
58	ZDV
59	SEA
60	ZHU
61	SUX
62	TUL
63	ZKC
64	JAX
65	ADS
66	ZMA
67	ZLC
68	PUB
69	F11
70	ABI
71	PHX
72	MKC
73	ZMP
74	P31
75	SAN
76	BNA
77	ZSE
78	BED
79	SDF
80	SMF
81	PWM
82	TLH
83	LNK
84	AMA
85	MDW
86	VNY
87	SFO
88	ADW
89	CLT
90	GSP
91	BHM
92	CRP
93	IAD
94	SGF
95	YIP
96	DTW

NCEPT Priority	Facility
97	HSV
98	STL
99	ZBW
100	DAL
101	GGG
102	ICT
103	STP
104	VGT
105	CHA
106	T75
107	TMB
108	ARB
109	MOB
110	ZSU
111	DCA
112	CVG
113	RVS
114	MYF
115	ANC
116	LIT
117	SRQ
118	ZAN
119	FFZ
120	ZUA
121	LGB
122	ACY
123	ALB
124	PDK
125	L30
126	LOU
127	VRB
128	SHV
129	DAB
130	EUG
131	CLE
132	SAT
133	ZOA
134	PHF
135	MCI
136	MSY
137	BUR
138	EMT
139	FTW
140	ONT
141	RSW
142	BJC
143	CRQ
144	MWH

NCEPT Priority	Facility
145	LVK
146	OKC
147	MCO
148	CAK
149	LAN
150	R90
151	ACK
152	PIA
153	FCM
154	ABE
155	HEF
156	MMU
157	SUS
158	SBN
159	P80
160	ILM
161	FAY
162	SBA
163	MRY
164	PRC
165	AZO
166	CKB
167	RDU
168	STS
169	MGM
170	GPT
171	BIL
172	GFK
173	EVV
174	OMA
175	TOL
176	CPS
177	SMO
178	GRR
179	SAV
180	FAR
181	AGC
182	PVD
183	YNG
184	MIC
185	HIO
186	DPA
187	BTV
188	ASE
189	FAI
190	TRI
191	FAT
192	STT

Appendix: 2 June 2016 NCEPT Panel – Facility Priority and Selection List

NCEPT Priority	Facility
193	HTS
194	MLI
195	HOU
196	BOI
197	CNO
198	MHT
199	ROA
200	MSN
201	SFB
202	FSM
203	TEB
204	SPI
205	GTF
206	PIT
207	DLH
208	JAN
209	AVL
210	HUF
211	BFL
212	BIS
213	SDL
214	FLO
215	POC
216	ALO
217	AGS
218	HLN
219	MYR
220	ROC
221	SYR
222	PDX
223	MRI
224	PBI
225	MKG

NCEPT Priority	Facility
226	LFT
227	GSO
228	SJC
229	OAK
230	PAO
231	GEG
232	K90
233	TUS
234	ELP
235	ACT
236	MFD
237	RIC
238	CMA
239	AUS
240	BGR
241	TVC
242	CAE
243	ROW
244	LCH
245	FNT
246	FXE
247	CSG
248	BTR
249	APA
250	SNA
251	CRW
252	PTK
253	RDG
254	NEW
255	POU
256	DWH
257	HPN
258	CMH

NCEPT Priority	Facility
259	U90
260	OGG
261	LEX
262	FWA
263	DSM
264	LBB
265	PAE
266	PNS
267	GCN
268	BGM
269	IND
270	ARR
271	AVP
272	MKE
273	ELM
274	MLU
275	CCR
276	ISP
277	FPR
278	MBS
279	PSP
280	FSD
281	CPR
282	E10
283	PSC
284	RHV
285	CID
286	AFW
287	TYS
288	MDT
289	BFI
290	A11
291	SJU

NCEPT Priority	Facility
292	GRB
293	RST
294	CMI
295	ABQ
296	PWK
297	RFD
298	COS
299	FRG
300	APC
301	MAF
302	CDW
303	JNU
304	CHS
305	ERI
306	ORL
307	PNE
308	HWD
309	ORF
310	PIE
311	SCK
312	TOA
313	TWF
314	ITO

Appendix: 2 June 2016 NCEPT Panel – Facility Priority and Selection List

NCEPT Priority	Service Area	District	Facility From	Facility To
2	Central	Lake Effect	AUS	C90
2	Central	Lake Effect	S46	C90
3	Eastern	Southern Skies	FNT	A80
3	Eastern	Southern Skies	F11	A80
3	Eastern	Southern Skies	U90	A80
3	Eastern	Southern Skies	PDK	A80
4	Eastern	New England	ZBW	BOS
4	Eastern	New England	ACK	BOS
5	Western	Rocky Mountain	IAH	DEN
6	Eastern	Paradise	FSD	MIA
6	Eastern	Paradise	ORL	MIA
6	Eastern	Paradise	ZJX	MIA
6	Eastern	Paradise	ORL	MIA
6	Eastern	Paradise	ZLC	MIA
6	Eastern	Paradise	IAD	MIA
6	Eastern	Paradise	FXE	MIA
6	Eastern	Paradise	SRQ	MIA
6	Eastern	Paradise	FXE	MIA
6	Eastern	Paradise	PIT	MIA
6	Eastern	Paradise	DCA	MIA
7	Western	Rocky Mountain	APA	D01
8	Eastern	New England	PIT	A90
8	Eastern	New England	K90	A90
8	Eastern	New England	ZDV	A90
8	Eastern	New England	MHT	A90
8	Eastern	New England	AUS	A90
9	Eastern	Enroute	CHS	ZTL
9	Eastern	Enroute	ZDV	ZTL
9	Eastern	Enroute	TLH	ZTL
11	Central	Northern Planes	ZMP	M98
11	Central	Northern Planes	MSN	M98
11	Central	Northern Planes	GFK	M98
11	Central	Northern Planes	MKE	M98
11	Central	Northern Planes	IND	M98
11	Central	Northern Planes	MKE	M98
12	Western	Southern California	SBA	SCT
12	Western	Southern California	SAN	SCT
12	Western	Southern California	TOA	SCT
12	Western	Southern California	E10	SCT
12	Western	Southern California	ABQ	SCT
12	Western	Southern California	POC	SCT

NCEPT Priority	Service Area	District	Facility From	Facility To
12	Western	Southern California	ITO	SCT
12	Western	Southern California	HEF	SCT
12	Western	Southern California	LVK	SCT
12	Western	Southern California	EMT	SCT
12	Western	Southern California	E10	SCT
12	Western	Southern California	A11	SCT
12	Western	Southern California	U90	SCT
12	Western	Southern California	CNO	SCT
13	Western	Southern California	TOA	LAX
13	Western	Southern California	TOA	LAX
13	Western	Southern California	PSP	LAX
13	Western	Southern California	VGT	LAX
14	Eastern	New York	PNE	JFK
14	Eastern	New York	ORF	JFK
15	Eastern	Enroute	ZBW	ZDC
17	Eastern	Capital	HEF	PCT
17	Eastern	Capital	IAD	PCT
20	Eastern	Magnolia	HWD	M03
21	Central	Greater Southwest	A11	D10
24	Eastern	Susquehanna	PNE	PHL
25	Western	Western Desert	FFZ	LAS
29	Eastern	Paradise	SJU	FLL
29	Eastern	Paradise	DCA	FLL
30	Central	Enroute	ZBW	ZFW
30	Central	Enroute	CHS	ZFW
33	Central	Enroute	YNG	ZOB
33	Central	Enroute	ZDV	ZOB
35	Western	Western Desert	PDX	DVT
38	Western	Rocky Mountain	ZDV	S56
40	Eastern	New York	MMU	LGA
40	Eastern	New York	MMU	LGA
43	Western	Enroute	LGB	ZLA
46	Western	Rocky Mountain	SDL	SLC
47	Eastern	Paradise	SJU	TPA
47	Eastern	Paradise	CLT	TPA
47	Eastern	Paradise	ZDV	TPA
48	Eastern	Susquehanna	ZBW	BUF
51	Central	Northern Planes	SFO	MSP
53	Central	Enroute	ZMP	ZID
60	Central	Enroute	NCT	ZHU
60	Central	Enroute	DWH	ZHU
62	Central	Mid-America	RVS	TUL

Appendix: 2 June 2016 NCEPT Panel – Facility Priority and Selection List

NCEPT Priority	Service Area	District	Facility From	Facility To
64	Eastern	Southern Skies	VRB	JAX
64	Eastern	Southern Skies	AUS	JAX
74	Eastern	Paradise	ZMP	P31
76	Eastern	Magnolia	CLT	BNA
76	Eastern	Magnolia	SUS	BNA
77	Western	Enroute	S46	ZSE
77	Western	Enroute	ZUA	ZSE
79	Eastern	Piedmont	LOU	SDF
81	Eastern	New England	ZBW	PWM
88	Eastern	Capital	PSP	ADW
98	Central	Mid-America	SUS	STL
103	Central	Northern Planes	MIC	STP
114	Western	Southern California	POC	MYF
129	Eastern	Paradise	MCO	DAB
130	Western	Northwest	OAK	EUG
141	Eastern	Paradise	PNS	RSW
196	Western	Northwest	BJC	BOI
196	Western	Northwest	NCT	BOI
225	Central	Great Lakes	CRQ	MKG
291	Eastern	Paradise	ABQ	SJU
111	Central	Northern Planes	DCA	MSP
296	Central	Lake Effect	PWK	ORD

Appendix: 3 September 2016 NCEPT Panel – Facility Priority and Selection List

NCEPT Priority	Facility
1	N90
2	C90
3	BOS
4	ATL
5	DEN
6	E10
7	NCT
8	ZTL
9	A80
10	MIA
11	D01
12	Y90
13	MEM
14	DCA
15	PCT
16	ZJX
17	D21
18	F11
19	DFW
20	PHL
21	ZAU
22	ZDC
23	SCT
24	D10
25	ZFW
26	A90
27	ZME
28	M98
29	ZOB
30	I90
31	JFK
32	S46
33	MSP
34	PHX
35	FLL
36	ZAB
37	LAX
38	ZDV
39	SFO
40	MMU
41	HCF
42	MHT
43	ZNY
44	ORD
45	EWR
46	STL
47	BWI

NCEPT Priority	Facility
48	ZLA
49	LGB
50	DVT
51	BPT
52	ZKC
53	LOU
54	IAH
55	LGA
56	M03
57	CLT
58	ACK
59	SEA
60	SLC
61	FFZ
62	SRQ
63	PUB
64	ZHU
65	LAS
66	ZMA
67	ZSE
68	SAN
69	PAO
70	P50
71	S56
72	ZLC
73	ZUA
74	ZID
75	SEE
76	TPA
77	ZBW
78	CRP
79	SJC
80	ZMP
81	EMT
82	RHV
83	ZSU
84	K90
85	BJC
86	MCO
87	VGT
88	SPI
89	BED
90	OKC
91	RVS
92	TUL
93	LAF
94	LIT

NCEPT Priority	Facility
95	ROA
96	DAY
97	JAX
98	ARB
99	HEF
100	BDL
101	TEB
102	VNY
103	IAD
104	SDF
105	CVG
106	DAL
107	MSY
108	R90
109	DTW
110	BHM
111	LNK
112	VRB
113	T75
114	ILG
115	ICT
116	MCI
117	PWM
118	LVK
119	SMO
120	RNO
121	ONT
122	PIT
123	MDW
124	MSN
125	ZOA
126	PDK
127	FTW
128	CPS
129	EUG
130	CRQ
131	MRI
132	STT
133	NEW
134	STS
135	MYR
136	DLH
137	OAK
138	ZAN
139	AUS
140	MOB
141	RDU

NCEPT Priority	Facility
142	SUS
143	DAB
144	P80
145	CLE
146	STP
147	FCM
148	P31
149	BUF
150	L30
151	APA
152	ACY
153	FSM
154	ALB
155	RSW
156	TMB
157	MIC
158	YIP
159	FAY
160	MGM
161	OMA
162	DPA
163	PTK
164	SFB
165	ILM
166	GGG
167	BIL
168	SAV
169	BNA
170	SBN
171	AZO
172	HOU
173	BFL
174	FAR
175	U90
176	PRC
177	GFK
178	ELP
179	MWH
180	TOL
181	CAE
182	ABI
183	SAT
184	AMA
185	FAT
186	SNA
187	GCN
188	EVV

Appendix: 3 September 2016 NCEPT Panel – Facility Priority and Selection List

NCEPT Priority	Facility
189	ALO
190	JNU
194	MLI
195	MYF
196	DWH
197	CMA
198	FLO
199	ROW
200	ABE
201	CKB
202	SUX
203	SGF
204	MFD
205	HLN
206	FXE
207	GSP
208	PHF
209	SDL
210	SYR
211	BTV
212	SBA
213	PDX
214	AGC
215	IND
216	HTS
217	POC
218	TVC
219	JAN
220	TUS
221	CSG
222	CHS
223	LCH
224	GPT
225	MKE
226	SMF
227	SHV
228	GSO
229	BOI
230	ANC
231	FWA
232	ADW
233	HUF
234	POU
235	SCK
236	ABQ
237	TYS
238	HWD
239	YNG
240	FPR

NCEPT Priority	Facility
191	GTF
192	PIA
241	RFD
242	PVD
243	FAI
244	BUR
245	ACT
246	PNE
247	ELM
248	AVL
249	CMH
250	SJU
251	HIO
252	MKC
253	ASE
254	MKG
255	CCR
256	ROC
257	PIE
258	ADS
259	CPR
260	HPN
261	FNT
262	AVP
263	LAN
264	APC
265	GRR
266	PSP
267	MBS
268	PAE
269	CID
270	BFI
271	MDT
272	CAK
273	ARR
274	ITO
275	TLH
276	HSV
277	BIS
278	PBI
279	CRW
280	BTR
281	PNS
282	RIC
283	FSD
284	LEX
285	GEG
286	CHA
287	LBB

NCEPT Priority	Facility
193	LFT
288	DSM
289	TOA
290	CMI
291	CDW
292	BGR
293	RDG
294	TRI
295	PWK
296	A11
297	FRG
298	CNO
299	AFW
300	AGS
301	COS
302	ISP
303	BGM
304	PSC
305	ERI
306	ORF
307	MAF
308	OGG
309	RST
310	GRB
311	ORL
312	MRY
313	MLU
314	TWF

Appendix: 3 September 2016 NCEPT Panel – Facility Priority and Selection List

NCEPT Priority	Service Area	District	Facility From	Facility To	NCEPT Priority	Service Area	District	Facility From	Facility To
3	Eastern	New England	LAS	BOS	23	Western	Southern California	SNA	SCT
3	Eastern	New England	IAH	BOS	23	Western	Southern California	SAN	SCT
4	Eastern	Southern Skies	ORL	ATL	23	Western	Southern California	SNA	SCT
4	Eastern	Southern Skies	CAE	ATL	24	Central	Greater Southwest	MKE	D10
4	Eastern	Southern Skies	MYR	ATL	28	Central	Northern Planes	SBA	M98
4	Eastern	Southern Skies	YIP	ATL	28	Central	Northern Planes	GFK	M98
4	Eastern	Southern Skies	EMT	ATL	28	Central	Northern Planes	GFK	M98
4	Eastern	Southern Skies	JNU	ATL	29	Central	Enroute	CLE	ZOB
5	Western	Rocky Mountain	LAS	DEN	29	Central	Enroute	CLE	ZOB
5	Western	Rocky Mountain	SEA	DEN	30	Central	Texana	L30	I90
5	Western	Rocky Mountain	PAE	DEN	30	Central	Texana	DWH	I90
5	Western	Rocky Mountain	DTW	DEN	31	Eastern	New York	CDW	JFK
5	Western	Rocky Mountain	SDL	DEN	32	Western	Northwest	BFI	S46
7	Western	Sierra-Pacific	SBA	NCT	32	Western	Northwest	A11	S46
7	Western	Sierra-Pacific	CCR	NCT	32	Western	Northwest	A11	S46
7	Western	Sierra-Pacific	SCK	NCT	37	Western	Southern California	SAN	LAX
7	Western	Sierra-Pacific	FPR	NCT	38	Western	Enroute	VGT	ZDV
7	Western	Sierra-Pacific	CLE	NCT	38	Western	Enroute	ZLC	ZDV
8	Eastern	Enroute	ZLC	ZTL	44	Central	Lake Effect	PWK	ORD
9	Eastern	Southern Skies	L30	A80	46	Central	Mid-America	SUS	STL
10	Eastern	Paradise	PBI	MIA	49	Western	Southern California	POC	LGB
10	Eastern	Paradise	SJU	MIA	49	Western	Southern California	STS	LGB
10	Eastern	Paradise	POU	MIA	49	Western	Southern California	POC	LGB
11	Western	Rocky Mountain	A11	D01	53	Eastern	Piedmont	MYR	LOU
11	Western	Rocky Mountain	BNA	D01	60	Western	Rocky Mountain	BOI	SLC
12	Eastern	New England	CRW	Y90	64	Central	Enroute	ZLC	ZHU
14	Eastern	Capital	BWI	DCA	64	Central	Enroute	IAH	ZHU
14	Eastern	Capital	BWI	DCA	67	Western	Enroute	PAE	ZSE
15	Eastern	Capital	ORF	PCT	75	Western	Southern California	BFI	SEE
16	Eastern	Enroute	TLH	ZJX	76	Eastern	Paradise	PSP	TPA
16	Eastern	Enroute	TLH	ZJX	102	Western	Southern California	POC	VNY
16	Eastern	Enroute	ORL	ZJX	122	Eastern	Susquehanna	CMH	PIT
17	Central	Great Lakes	PHF	D21	141	Eastern	Piedmont	EUG	RDU
18	Eastern	Paradise	MCO	F11	146	Central	Northern Planes	MIC	STP
19	Central	Greater Southwest	PHX	DFW					
19	Central	Greater Southwest	L30	DFW					
21	Central	Enroute	ZKC	ZAU					
21	Central	Enroute	RFD	ZAU					
21	Central	Enroute	RFD	ZAU					
22	Eastern	Enroute	ZLC	ZDC					
23	Western	Southern California	TOA	SCT					

Appendix: 3 September 2016 NCEPT Panel – Facility Priority and Selection List

